



DE GUZMAN & CO.

QUICK START GUIDE

DG010 DIVER AUTOMATIC

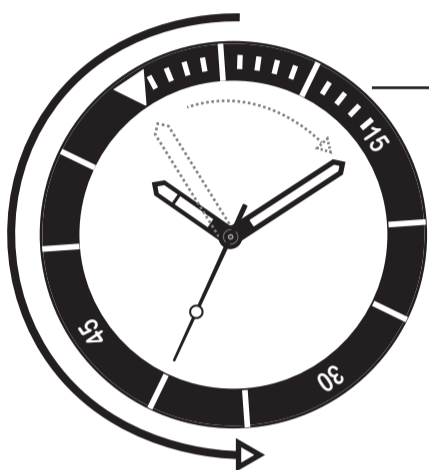
(MOVEMENT: SEIKO INSTRUMENTS INC. NH35)

ND LIMITS

12m	200	30m	25
15m	100	33m	20
18m	60	36m	15
21m	50	39m	10
24m	40	42m	10
27m	30	45m	5

The DG010's caseback shows a No Decompression Time Table (ND Limits) as recommended by the US Navy Diving Manual. The **left column shows depth in meters** while the **right column of the table shows minutes** you may stay in that depth without decompression.

The ND Limits table only serves as a guide for the user, as recommended by the US Navy Diving Manual. De Guzman & Co. will not be held liable for any injury caused by misuse or misunderstanding of the ND Limits table and the risks associated with no decompression diving.

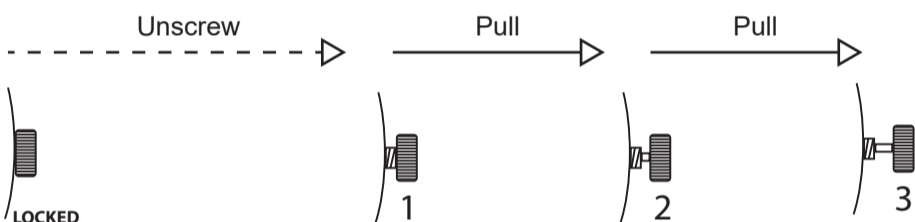


Rotating bezel for minute tracking

The rotating bezel is used to track elapsed minutes by aligning the lume triangle pip to the minute hand, elapsed minutes then can be checked after a certain period of time where the minute hand is now pointing on the bezel.

Example diagram above: 15 minutes have elapsed since setting of the reference minute.

Rotatable unidirectional bezel counter-clockwise



Water resistance is ensured **ONLY** when the crown is in locked position (screwed-in)

NOTICE:
Always keep the crown screwed-in to prevent water ingress and damage to the movement

HANDWINDING
Position 1 is right after unscrewing the crown. This allows handwinding of the automatic movement

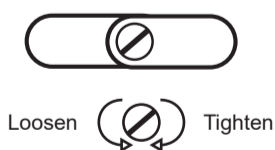
NOTICE:
If the movement has lost power (i.e. watch has not been used for a while), Wind the movement by rotating the crown clockwise approx. 20-30 times

DATE SETTING
Position 2 is when the crown is pulled **ONCE**. This allows setting of the date (counter-clockwise)

WARNING:
Do not set the date between 9:00 pm and 3:00 am to prevent damage to the movement mechanism

TIME SETTING
Position 3 is when the crown is pulled **TWICE**. This allows setting of the time.

ADJUSTING THE BRACELET

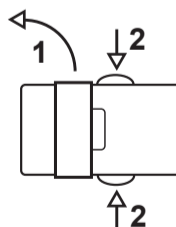


BRACELET ADJUSTMENT
Bracelet adjustments can be done using a screwdriver through the screw links found at the side of each bracelet link.

For a finer adjustment, use the adjustment pins on the side of the clasp

WARNING:
Do not overtighten the screw links to prevent stripping.

DG010: 1.0mm screwdriver



USE OF CLASP
DG010: Flip open the flip-lock keeper
2: Press both buttons to release the clasp