



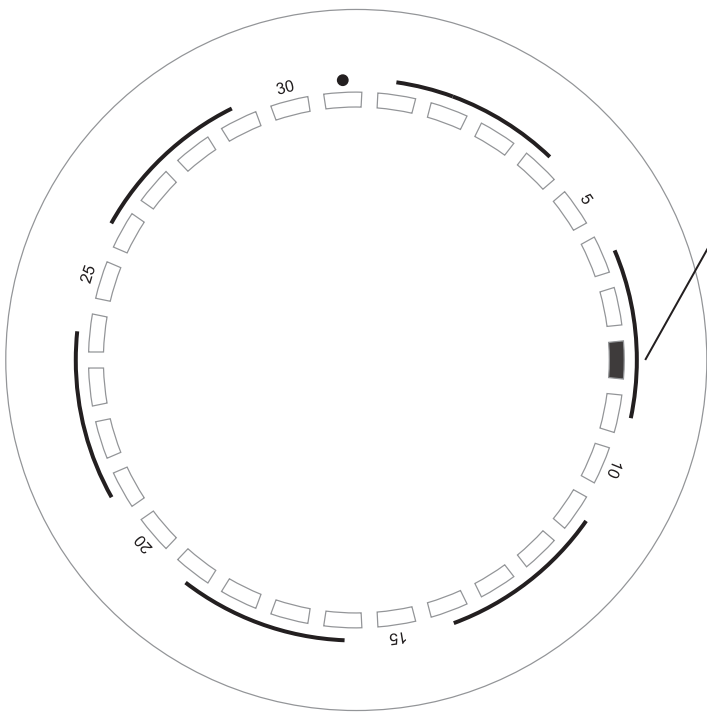
DE GUZMAN & CO.

# QUICK START GUIDE

DG014 FIELD AUTOMATIC  
MOVEMENT: SEIKO INSTRUMENTS INC. NH35

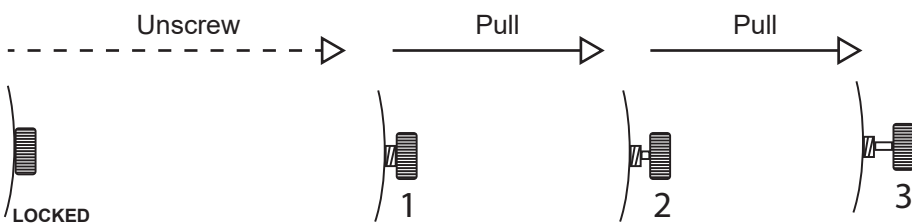


The DG014 uses a special date display on the dial, the InfinityDate display. This allows retention of the dial symmetry and design while also retaining the date display mechanism and functionality.



The highlighted part of the display indicates the day of the month. In this example, it is the 8th day of the month.

See Position 2 (below) to see how to set the date.



Water resistance is maintained ONLY when the crown is in the locked position (screwed-in). Unscrew by rotating the crown counter-clockwise.

**NOTICE:**  
*Always keep the crown screwed-in to prevent water ingress and damage to the movement.*

**HANDWINDING**  
Position 1 is right after unscrewing the crown. This allows handwinding of the automatic movement.

**NOTICE:**  
*If the movement has lost power (i.e. watch has not been used for a while), Wind the movement by rotating the crown clockwise approx. 20-30 times*

**DATE SETTING**  
Position 2 is when the crown is pulled ONCE. This allows setting of the date (counter-clockwise).

**WARNING:**  
*Do NOT set the date between 9:00 pm and 3:00 am to prevent damage to the movement mechanism*

**TIME SETTING**  
Position 3 is when the crown is pulled TWICE. This allows setting of the time.